



Six Signs Comprehensive Monitor



Your partner in business technology solutions ...

PM 6100 – Six Signs Comprehensive Monitor

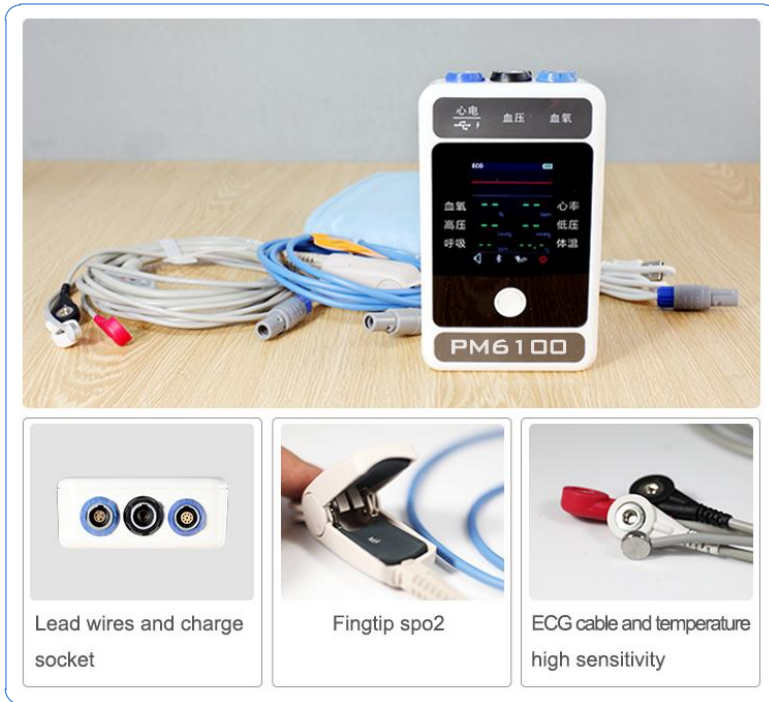
Overview

The PM6100 patient monitor integrates the functions of parameter measurement and waveform monitoring. It's color TFT liquid crystal display is able to show patient parameters and waveform clearly. The monitor also features compact size, lightweight, easy-to-carry handle and built-in battery, which makes it portable in the clinic, ward and even at home.



Features

- ✓ This device is capable of monitoring the following parameters:
 - ECG (Electrocardiogram)
 - HR (heart rate)
 - NIBP (noninvasive blood pressure)
 - SpO₂
 - PR (Pulse rate)
 - TEMP (body temperature)
- ✓ The One-Button-Design makes the monitor an easy to use system, so the operations can be conveniently performed.
- ✓ This monitor can be connected with other smart terminals such as a PC, iPhone and Android phones.
- ✓ The device supports both Bluetooth 3.0 and BLE 4.0 communication



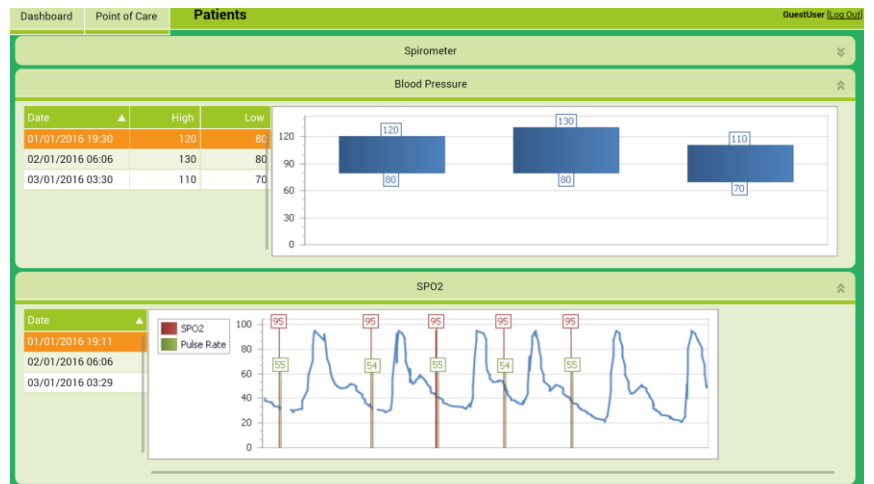
Lead wires and charge socket

Fingtip spo2

ECG cable and temperature high sensitivity

Characteristics

- ✓ Portability enabled
- ✓ Battery powered
- ✓ Chargeable via USB
- ✓ Cloud data storage
- ✓ Online web access to historic data
- ✓ GEO location enabled
- ✓ Secure data end to end
- ✓ Encrypted data storage



Products

Name	Description
Container Management System (CMS)	Container tracking, maintenance and repair for container depots
Warehouse Information System Enterprise (WISE)	Warehouse logistics, import and export cargo handling and storage
eClinic	Patient management system for clinics
Environmental Management Information System (EMIS)	Permitting, scheduling of inspections and audits, Incident management for Depts. of Water and Health
Integrated Document Administration Console (iDAC)	Warehouse of manual and electronic documents for storage and ease of retrieval
Express accounting - Debtors	Simple web based debtors management software
Dashboards	Operational and management real time dashboards
Clinical Workstation	Telemedicine medical cart with digital medical devices, video conferencing, with online server infrastructure to facilitate mobility
Patient Transport System	Booking and management of transport of patients with RFID integration for accurate control
Real time live video streaming and surveillance	Video surveillance system with real time streaming for ease of remote access with mobile devices
Digital medical device kit	Portable digital medical kit to screen non communicable diseases

34 Essex Terrace
Westville
KZN South Africa

Tel: +27 31 2662056
www.harpan.co.za
sales@harpan.co.za



Your partner in business technology solutions ...